

BeamOn U3 Pro - E

NEW



- Innovative Beam Profiler (1.1")
- 40 Hz
- High resolution (1.77 MPixel) **16 bit** dynamic range
- USB 3.0
- Complete test station with built-in motorized Filter Wheel and full set of accessories
- Multiple active areas for multi beam analysis
- Versatile - Measures **Profile, Power and Position**

Specifications

Laser Type	CW & Pulsed	Beam width accuracy	±1.5%
Beam Width Resolution	1 micron or better	Synchronization	•Software trigger
Resolution (H x V pixels)	1600 x 1100 (Global Shutter)	Exposure & Gain Control	Programmable via GUI
Beam Size	∅100 μm - ∅9 mm	Accessories	-IR Edge Filter
Spectral Response	350 – 1550 nm (VIS NIR), 190 – 1350 nm (UV) *1550 – Contact Factory		-SAM3-C
Sensor Active Area (mm)	14.5 x 9.9, sensor can be divided into multiple active areas, working in parallel for up to 400 sectors (NEW)	-RDC	-C-Mount Filter
Gain Control	User Selectable	Power Requirements	~2 Watt (Via USB 3.0 interface)
Dynamic Range	60 dB, 16 bit	Housing Size (L x W x H) in mm	64 x 46 x 73.5
Exposure	32 μsec to 2 sec	Weight (typical)	300 gr.
Frame Rate	40 fps (8 bit)	Min. Hardware Requirements	CPU i5 1.6 GHz, 8 GB RAM
	30 fps (16 bit)	Interface	USB 3.0, windows 8/10/11 (32 & 64 bit)
AIO (64x40) 397 fps, AOI (120x80)	Mechanical Interface		Post mounting: 2 concentric opposite 8-32 UNC 6 mm depth at the detector plane
240 fps, AOI (240x160) 190 fps		Optical attachments & filters: C-mount	
Pixel Size	9 μm x 9 μm	Built-in Automatic filter wheel	With mounted filters: ND8, ND200, ND1000, one unpopulated.
Pixel Bit Depth	16 bits		(UV Version comes with additional UV Bandpass Filter at position #1)

Wavelength	633	980	1310	1550
Saturation	20 μW/mm ²	100 μW/mm ²	0.2 W/mm ²	0.5 W/mm ²
Sensitivity	Better than 1 nanoW/mm ²	Better than 1 nanoW/mm ²	70 μW/mm ²	2 mW/mm ²

Ordering Information

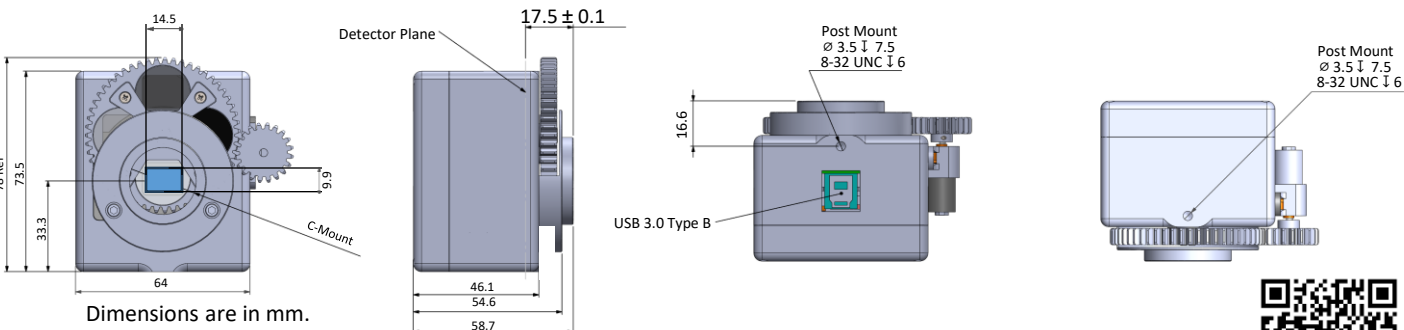
BeamOn U3 Pro-E: A camera for 350 – 1550 nm with motorized built-in filter wheel, USB3.0 cable 1.8 meters long, application software on CD/Flash Disk, mounting post, 35 mm hood for ambient light obstruction, carrying case.

SAM3-C: Attachment for high power lasers attenuation (up to 20 W)

RDC: Attachment for beam reducer (ratio 2x1)

BeamOn U3 Pro-E-UV: A camera for 190 – 1350 nm with motorized built-in filter wheel, USB3.0 cable 1.8 meters long, application software on CD/Flash Disk, mounting post, 35 mm hood for ambient light obstruction, carrying case, additional UV filter at position #1.

IR-Edge Filter: C-mount filter for IR Edge.



DUMA OPTRONICS LTD.

Website: <http://www.dumaoptronics.com>

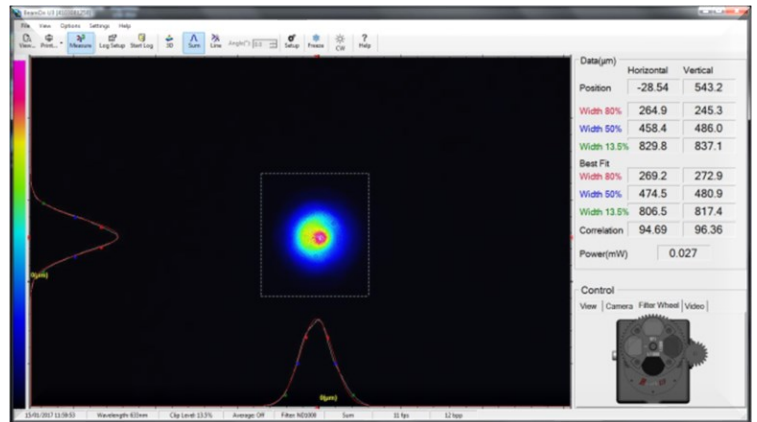
E-mail: sales@duma.co.il

December 2024



BeamOn U3 Pro - E

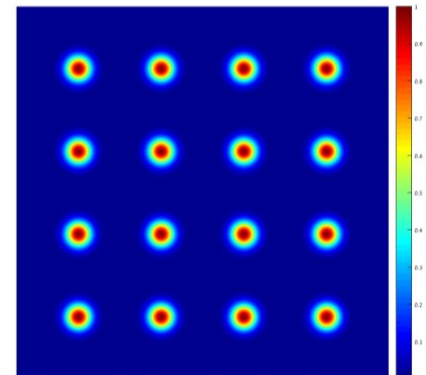
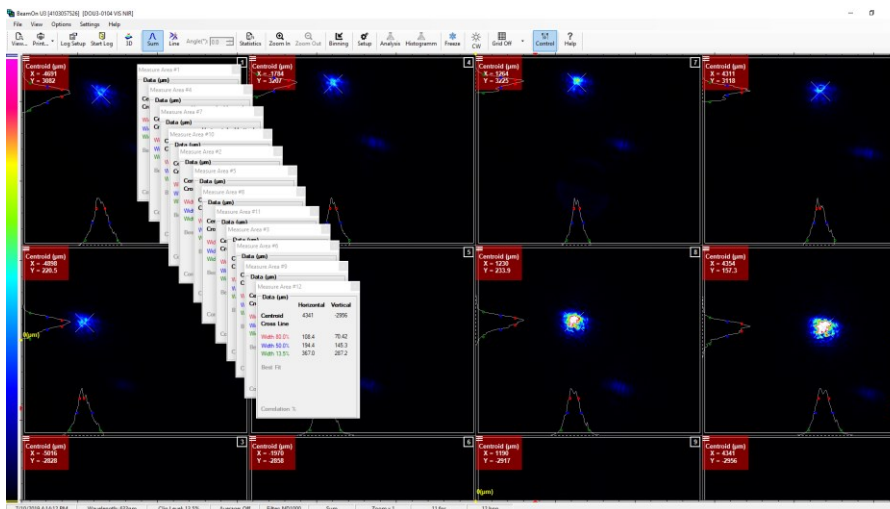
NEW



- Real-Time Calculation & Display of Beam Profile, Beam Size, Gaussian Fit and Top Head
- TCP/IP, DLL Communication Protocols
- PASS/FAIL Testing

Multi-Beam Analysis

Up to 400 Independent Beams Analysis



- Simultaneous independent beam profiles
- Interposition of each beam's center of energy
- Detailed test report in a table format

DUMA OPTRONICS LTD.

